

Strobe - 355 candela, Hazardous Location XB12



Description:

These high output certified strobes have been designed for use in potentially explosive atmospheres and harsh environmental conditions. The enclosures are suitable for use offshore or onshore, where light weight combined with corrosion resistance is required.

The strobe housing is manufactured completely from a U.V. stable, glass reinforced polyester. Stainless steel screws and mounting bracket are incorporated ensuring a totally corrosion free product.

Units can be painted to customer specification and supplied with identification labels.

Features*:

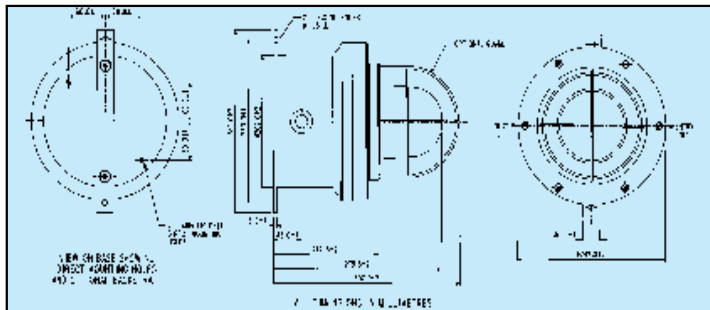
- UL Listed for USA and Canada
 - Hazardous locations:
 - Class I, Div 2, Groups C & D.
 - Class I, Zones 1 & 2, AExd IIB T4 & T5.
 - Ordinary locations: Visual-Signal Device
- California State Fire Marshal (CSFM) Listed
- ATEX approved
- High Output 355 candela with clear lens
- NEMA 4x & 6, IP66 and IP67
- Certified temperature -67°F to $+158^{\circ}\text{F}$ (-55°C to $+70^{\circ}\text{C}$)
- Corrosion resistant GRP
- Optional stainless steel backstrap
- Various lens colors
- Optional lens guard
- 4 wire monitored connection
- 24 VDC, 110 & 240 VAC
- Xenon
- Twin replaceable tubes

Architects and Engineers Specifications

Strobes for hazardous locations and harsh environments shall be UL and cUL listed for Class I, Division 2, Groups C&D, and Class I, Zones 1&2, AExd IIB T4/T5 applications and shall be listed under UL Standard 1638 for Indoor/Outdoor use. They shall be constructed of lightweight, UV stable glass reinforced polyester, shall be corrosion resistant, and shall meet NEMA 4x, NEMA 6, IP 66 & IP 67 environmental requirements over a temperature range of -67°F to $+158^{\circ}\text{F}$ (-55°C to $+70^{\circ}\text{C}$).

The strobes shall be rated to flash at 1 Hz with 355 candela per flash. Rated current draw shall not exceed 1400 mA at 24 vdc. The strobe shall be capable of direct surface mounting in any direction.

Note: Due to continuous development of our products, specifications and offerings are subject to change without notice in accordance with Cooper Wheelock standard terms and conditions.



	DC	AC50/60 Hz	
Voltage	24	110	240
XB12 Tube Energy (Joules)	21	21	21
Peak Current Consumption (mA)	1400	350	185
Effective Intensity (Cd)	355	355	355
NOTE: The Cd figures are for a clear lens @ 1Hz flash rate.			

For Colored Lenses

Color	Red	Blue	Amber	Green	Yellow
Multiplying Factor	0.15	0.12	0.51	0.49	0.86

The photometric data has been verified by BSI. A report is available if required.

Configuration Options:

The following code is designed to help in the selection of the correct unit. Build up the reference number by inserting the code for each component into the appropriate box.

XB12							N			
Certification Code	Guard Code		Label Code		Options Code					
UL UL UL (ordinary locations) UW	None N Yes Y		None N Yes Y* (Please specify)		Blanking Plug P None N					
Voltage Code	Color Code		Unit Fixing Code		Continuity Code		Finish Code			
24V d.c. 024 110V a.c. 110 240V a.c. 240	Red R Blue B Green G Amber A Yellow Y Clear C		Direct Mounting D Backstrap B		None N		Natural Black N Red R Blue B Yellow Y Grey G White W Special Finish S			
Flash Rate Code										
60/min 06 Other flash rates available, please specify.										

Standard Models

Series	Model Number	Order Code	Description
XB12	XB12UL02406RNBNNNR	109204-001	Strobe, Red Lens, 355 candela, 24 VDC, Red finish
XB12	XB12UL02406CNBNNNR	109204-002	Strobe, Clear Lens, 355 candela, 24 VDC, Red finish
XB12	XB12UL02406RNBNNNN	109204-003	Strobe, Red Lens, 355 candela, 24 VDC, Black finish
XB12	XB12UL11006ANBNNNR	109204-005	Strobe, Amber Lens, 355 candela, 110VAC, Red finish
XB12	XB12UL11006RNBNNNR	109204-006	Strobe, Red Lens, 355 candela, 110VAC, Red finish



WE ENCOURAGE AND SUPPORT NICET CERTIFICATION
3 YEAR WARRANTY
XB12 07/07

Specification

Certification:	UL Listed for USA and Canada: – Hazardous locations: Class I, Div 2 Groups C & D. Class I, Zones 1 & 2 AExd IIB T4/T5. UL Listing No: E187894. – Ordinary locations: Visual-Signal Device. California State Fire Marshal (CSFM) Listed UL listing No. S8128. ATEX approved: EExd IIB T4/T5 Cert. No. 99 ATEX 2196
Material:	Body: – Glass reinforced polyester (GRP). Lens: – Toughened Glass. Cover Screws + Backstrap: – Stainless steel 316.
Finish:	Natural black or painted to customer specification.
Weight:	15.5 lb./7.0Kg.
Certified Temperature:	–67°F to +158°F (–55°C to +70°C) hazardous locations –67°F to +131°F (–55°C to +55°C) ordinary locations
Ingress Protection:	NEMA 4x & 6, IP66 & IP67.
Terminals:	6 x 10 AWG
Labels:	Duty/Tag Label optional.
Entries:	2 x 1/2" NPT

NJ Location
273 Branchport Ave.
Long Branch, NJ 07740
P: 800-631-2148
F: 732-222-8707
www.coopernotification.com

FL Location
7565 Commerce Ct.
Sarasota, FL 34243
P: 941-487-2300
F: 941-487-2389

VA Location
P: 877-459-7726
F: 703-294-6560